

Harvester 500-series



A new generation of harvesters. With everything extra.

The latest generation of Eco Log's 500 series has been equipped with everything extra. The model range gets its power from 218 to 320 hp Volvo Penta D8 engines and has been optimized for maximum operational reliability and efficiency.

The powerful crane with up to 310 kNm (228644 lb-ft) is one of the many features that helps you increase your production by up to 10%*.

Read more about our new generation harvesters at ecologforestry.com

+10%
approximate
increase in
production*

592l/min
(156 gal US)
min oil flow**

* Compared to competitors. Based on reported customer experience

** Maximum flow for working hydraulics of 590.

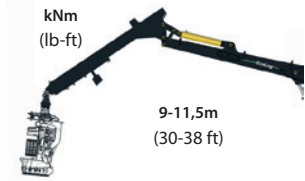
Crane

550/550 T-PRO | 220 kNm
(188078 lb-ft)

560 | 255 kNm
(188078 lb-ft)

580 | 270 kNm
(199142 lb-ft)

590 | 310 kNm
(228644 lb-ft)



SERVICE FRIENDLY

All components are easily accessible under the two large hoods at the rear of the machine. Most components are easy to disassemble and / or tilt.

POWERFUL ENGINES

Eco Log's harvesters in the 500 Series are powered by Volvo Penta D8 engines, which are characterized by high performance, reliability, fuel efficiency and low emission levels.



Turnable cabin

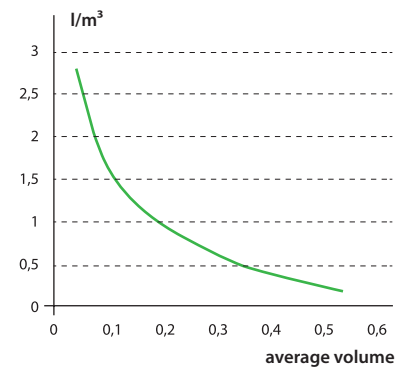


TURNABLE CABIN

The cabin can turn 350°.

- + Comfort
- + Accuracy
- + Visibility
- + Efficiency

FUEL CONSUMPTION



Measured fuel consumption for Eco Log 580 with Log Max 5000 and Volvo Penta D8 engine.



- Unique pendulum arms suspension technology.
- Tilt sideways $\pm 25^\circ$
- Tilt longitudinally $\pm 17^\circ$

* To make the 590 even more flexible in different terrain, it's available with a balanced bogie option.

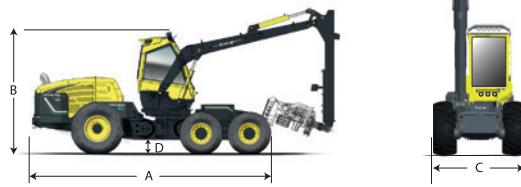
OPTIMIZED COOLING SYSTEM

A recirculation pump along with vertically positioned coolers optimizes the cooling capacity of the machine.

UNIQUE PENDULUM ARMS

Eco Log's unique pendulum suspension provides the best possible accessibility and stability in demanding terrains.

Specifications



550 550 T-PRO 560 580 590

Dimensions					
Length, max (a), mm (in)	7230 (285)	7402 (291)	7402 (291)	7402 (291)	7767 (306)
Height, min/max (b), mm (in)	3385-4528 (133-178)	3338-4464 (131-176)	3338-4464 (131-176)	3338-4464 (131-176)	3430-4820 (135-190)
Ground clearance (d), mm (in)	145-1324 (6-52)	146-1191 (6-47)	146-1191 (6-47)	146-1191 (6-47)	175-1260 (7-50)
Weight, kg (lbs)	17500 (38581)	19100 (42108)	19100 (42108)	20200 (44533)	21000 (46297)
Engine, Volvo Penta					
Type	6 cyl. D8 - 7.1	6 cyl. D8 - 7.1	6 cyl. D8 - 7.1	6 cyl. D8 - 7.1	6 cyl. D8 - 7.1
Stage/Tier	Euromot 4	Euromot 4	Euromot 4	3a ⁽¹⁾ /4	3a ⁽¹⁾ /4
Gross power @ 2200 rpm, kW/hp	160/218	160/218	185/252	210/286	235/320
Peak torque, Nm (lb-ft)	1050 (774) @1060 rpm	1050 (774) @1060 rpm	1150 (848) @1160 rpm	1250 (922) @1237 rpm	1300 (959) @1310 rpm
Fuel tank volume, L (gal US)	460 (122)	460 (122)	460 (122)	460 (122)	460 (122)
Transmission					
Hydrostatic	4 wd, 2 gears	6 wd, 3 gears	6 wd, 3 gears	6 wd, 3 gears	6 wd, 3 gears
Tractive force, max, kN (lbf)	155 (34845)	172 (38667)	172 (38667)	172 (38667)	190 (42714)
Speed off-road/Speed on-road, km/h (mph)	0-7/0-14 (0-4/0-9)	0-7/0-15 (0-4/0-9)	0-7/0-15 (0-4/0-9)	0-7/0-15 (0-4/0-9)	0-5/0-12 (0-3/0-7)
Wheels					
Front, standard	600/65x34	600/55x26,5	600/55x26,5	600/55x26,5	710/50x30,5
Front, option	710/55x34	710/45x26,5	710/45x26,5	710/45x26,5	650/65x26,5 / 700/50x30,5
Rear, standard	600/65x34	600/65x34	600/65x34	600/65x34	710/55x34
Rear, option	710/55x34	710/55x34	710/55x34	710/55x34	710/70x34
Width, standard/option (c), mm (in)	2606/2806 (103/110)	2790/2999 (110/118)	2790/2999 (110/118)	2790/2999 (110/118)	3077/3000/2977 (121/118/117)
Steering					
Steering angle, °	±44	±44	±44	±44	±44
Levelling					
Tilt angle front to back, °	±17	±17	±17	±17	±16
Tilt angle side to side, °	±25,5	±25,5	±25,5	±25,5	±25,5
Crane					
Reach, m (ft)	10-11,5 (33-38)	10-11,5 (33-38)	9-11,5 (30-38)	10-11,5 (33-38)	10-11 (33-36)
Gross lifting torque, kNm (lb-ft)	220 (162264)	220 (162264)	255 (188078)	270 (199142)	310 (228644)
Gross slewing torque standard/option, kNm (lb-ft)	38 (28027)	38 (28027)	38 (28027)	38 (28027)	50/70 ⁽¹⁾ (36878/51629 ⁽¹⁾)
Slewing angle, °	350	350	350	350	350
Hydraulic system					
Crane pump, cc (cu in)	140 (8,5)	140 (8,5)	140 (8,5)	140 (8,5)	180 (11)
Oil flow @ 1600 rpm for crane, l/min (gal US/min)	275 (73)	275 (73)	275 (73)	275 (73)	288 (76)
Head Pump, cc (cu in)	145 (8,8)	145 (8,8)	145 (8,8)	145 (8,8)	190 (11,6)
Oil flow @ 1600 rpm for harvester head, l/min (gal US/min)	285 (75)	285 (75)	285 (75)	285 (75)	304 (80)
Working pressure, MPa	25	25	25	25	26
Hydraulic tank volume, L (gal US)	232 (61)	232 (61)	232 (61)	232 (61)	274 (72)
Electrical system					
Voltage, V	24	24	24	24	24
Batteries, Ah	2x145	2x145	2x145	2x145	2x145
Alternator, A	130	130	130	130	130
Number of lights	20	20	20	20	20
Type	LED	LED	LED	LED	LED
Harvester head					
Log Max	3000/4000/5000 ⁽³⁾	3000T/4000T	3000/4000/5000/6000 ⁽⁴⁾	5000/6000 ⁽⁵⁾	6000/7000 ⁽³⁾

(1) Only in market areas outside the EU, USA & Canada. (2) 70kN (51629 lb-ft) theoretical value in the configuration with 3 swing motors – optional. (3) Only with 10 m crane. (4) Only with 9 m crane. (5) Maximum crane length 11 m.