

# Harvesters 500 series



# Eco Log – when you're in control

The Eco Log 500 series of harvesters offer operators complete control over their work by leveling and adjusting the machines to the prevailing ground conditions whatever the terrain.

Thanks to the superior ground clearance, reliability, service friendliness, and powerful crane, you and your Eco Log can easily achieve high productivity and a competitive cost of ownership.

Read more about our new generation of harvesters at [ecologforestry.com](http://ecologforestry.com)

Ground clearance up to

**4 feet**  
(1,2 m)

for mobility in any  
terrain

Improves your  
productivity

Long service  
intervals



## SERVICE FRIENDLY

Eco Log harvesters offer high service friendliness, with all machine parts and components easily accessible under the large hoods. The pendulum arms can be used to raise or lower the machine to the optimum working height for servicing.



## POWERFUL ENGINES

Eco Log's 500 series harvesters are powered by Volvo Penta engines. The latest addition is a Stage V engine, boasting high performance, great reliability, impressive fuel efficiency, and low emissions.

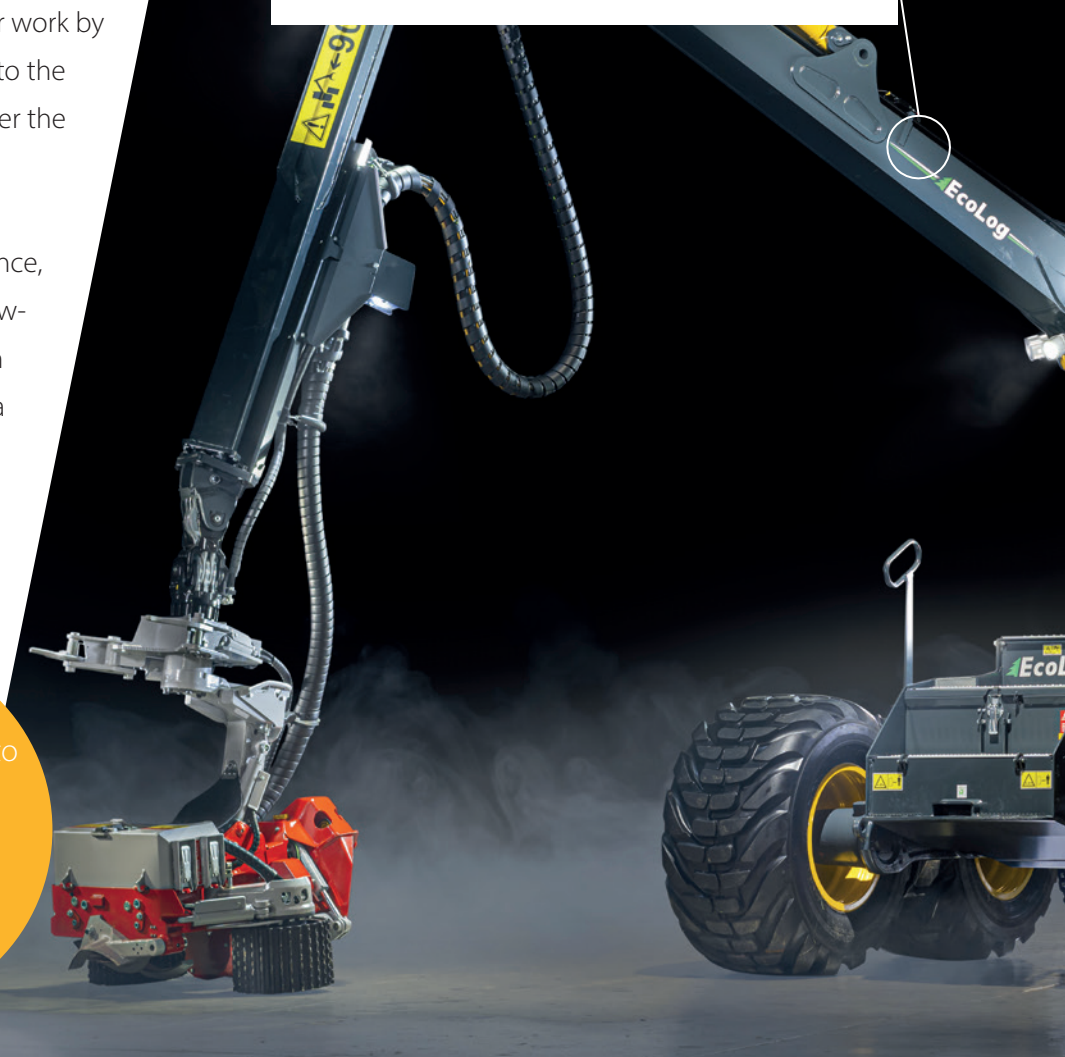
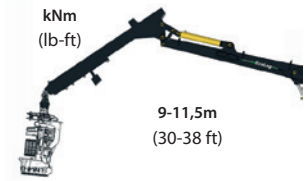
## Powerful crane

550/550 T-PRO | 220 kNm  
(162264 lb-ft)

560 | 255 kNm  
(188078 lb-ft)

580 | 270 kNm  
(199142 lb-ft)

590 | 310 kNm  
(228644 lb-ft)



## Superior ground clearance



Eco Log's 500 series provides unbeatable ground clearance and mobility in difficult terrain.

Thanks to the pendulum arms, the harvester's ground clearance can be adjusted from just over 4 inches (11 cm) up to almost 4 feet (1.2 m). The harvester passes over logs and rocks effortlessly, raising and lowering the undercarriage by means of the pendulum arms, either individually or together in concert. Thanks to the machine's ability to pass high obstacles and cross steep slopes, mobility is maximized, providing the necessary conditions for high productivity and efficiency.



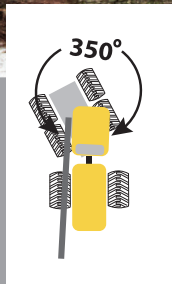
- Unique pendulum arm chassis suspension
- Sideways tilt  $\pm 25^\circ$
- Forward-backward tilt  $\pm 17^\circ$

\* To make the 590 even more flexible in demanding terrain, it can be equipped with a balanced bogie.

### TURNABLE CABIN

The cab can be rotated a full  $350^\circ$

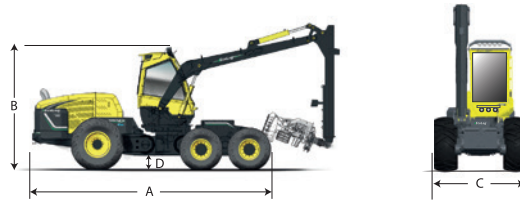
- Comfort
- Precision
- Good visibility
- Efficiency



### UNIQUE PENDULUM ARMS

Thanks to Eco Log's unique pendulum arm system, both harvester and operator are always ensured an optimized and ergonomic working position.

# Specifications



550F

550F T-PRO

560F

580F

590F

Dimensions					
Length, max. (a), mm (in)	7230 (285)	7402 (291)	7402 (291)	7402 (291)	7767 (306)
Height, min./max. (b), mm (in)	3385–4528 (133–178)	3338–4464 (131–176)	3338–4464 (131–176)	3338–4464 (131–176)	3430–4820 (135–190)
Ground clearance (d), mm (in)	145–1324 (6–52)	146–1191 (6–47)	146–1191 (6–47)	146–1191 (6–47)	175–1260 (7–50)
Weight, kg (lbs)	17 500 (38581)	19 100 (42108)	19 100 (42108)	20 200 (44533)	21 000 (46297)
Engine, Volvo Penta					
Type	6 cyl. D8 - 7.1	6 cyl. D8 - 7.1	6 cyl. D8 - 7.1	6 cyl. D8 - 7.1	6 cyl. D8 - 7.1
Emission requirements, Euromot Stage/Tier	Stage V/Tier 4F	Stage V/Tier 4F	Stage V/Tier 4F	Stage V/Tier 4F/Stage III <sup>(1)</sup>	Stage V/Tier 4F/Stage III <sup>(1)</sup>
Power, gross, at 2200 rpm, kW/hp	160/218	160/218	185/252	210/286	235/320
Torque, Nm (rpm), (lb-ft)	1060 (782)	1060 (782)	1160 (856)	1237 (912)	1310 (966)
Fuel tank, L (gal US)	460 (122)	460 (122)	460 (122)	460 (122)	460 (122)
Transmission					
Hydrostatic	4WD, 2 gears	6 WD, 3 gears	6 WD, 3 gears	6 WD, 3 gears	6 WD, 3 gears
Tractive force, max, kN (lbf)	155 (34845)	172 (38667)	172 (38667)	172 (38667)	190 (42714)
Driving speed, off-road/Driving speed, road, km/h (mph)	0–7/0–14 (0–4/0–9)	0–7/0–15 (0–4/0–9)	0–7/0–15 (0–4/0–9)	0–7/0–15 (0–4/0–9)	0–5/0–12 (0–3/0–7)
Tires					
Front	600/65x34	600/55x26.5	600/55x26.5	600/55x26.5	710/50x30.5
Front, optional	710/55x34	710/45x26.5	710/45x26.5	710/45x26.5	650/65x26.5 / 700/50x30.5
Rear	600/65x34	600/65x34	600/65x34	600/65x34	710/55x34
Rear, optional	710/55x34	710/55x34	710/55x34	710/55x34	710/70x34
Machine width, std/optional (c), mm (in)	2606/2806 (103/110)	2790/2999 (110/118)	2790/2999 (110/118)	2790/2999 (110/118)	3077/3000/2977 (121/118/117)
Steering					
Steering angle, °	±44	±44	±44	±44	±44
Leveling					
Tilt angle, forward/backward,	±17	±17	±17	±17	±16
Tilt angle, right/left, °	±25.5	±25.5	±25.5	±25.5	±25.5
Crane					
Reach, m (feet)	10–11.5 (33–38)	10–11.5 (33–38)	9–11.5 (30–38)	10–11.5 (33–38)	10–11 (33–36)
Lifting torque, gross, kNm (lb-ft)	220 (162264)	220 (81)	255 (188078)	270 (199142)	310 (228644)
Gross slewing torque standard/option, kNm (lb-ft)	38 (28027)	38 (28027)	38 (28027)	38 (28027)	50/70 <sup>(1)</sup> (36878/51629 <sup>(1)</sup> )
Slewing angle, °	350	350	350	350	350
Hydraulic system					
Crane pump, cc (cu in)	140 (8.5)	140 (8.5)	140 (8.5)	140 (8.5)	180 (11)
Oil flow at 1600 rpm for crane, l/min (US gal/m)	275 (73)	275 (73)	275 (73)	275 (73)	288 (76)
Head pump, cc (cu in)	145 (8.8)	145 (8.8)	145 (8.8)	145 (8.8)	190 (11,6)
Oil flow at 1600 rpm for head, l/min (US gal/m)	285 (75)	285 (75)	285 (75)	285 (75)	304 (80)
Working pressure, MPa (PSI)	25 (3,6)	25 (3,6)	25 (3,6)	25 (3,6)	26 (3,8)
Hydraulic tank, l (US gal)	232 (61)	232 (61)	232 (61)	232 (61)	274 (72)
Electrical system					
Voltage, V	24	24	24	24	24
Batteries, Ah	2x145	2x145	2x145	2x145	2x145
Alternator, A	130	130	130	130	130
Work lights, number	20	20	20	20	20
Type	LED	LED	LED	LED	LED
Head					
Log Max	3000/4000/5000 <sup>(3)</sup>	3000T/4000T	3000/4000/5000/6000 <sup>(4)</sup>	5000/6000 <sup>(5)</sup>	6000/7000 <sup>(5)</sup>

(1) Only available in countries outside EU/USA/Canada. (2) 70 kN theoretical value for machines equipped with 3 slewing motors (optional). (3) Only with 10 m (32.8 feet) crane. (4) Only with 9 m (29.5 feet) crane. (5) Maximum crane length 11 m (36.1 feet).

Eco Log Sweden AB, Norra Hamngatan 41, Box 84, 826 22 Söderhamn, Sweden  
www.ecologforestry.com

**EcoLog**<sup>®</sup>  
Forestry of tomorrow

Product specifications, configurations, dimensions, and weights may vary depending on any optional equipment fitted. Available standard and optional equipment may be market dependent. Eco Log Sweden AB reserves the right to modify its product specifications and designs without prior notice. Photos, diagrams, and illustrations do not always depict products with standard equipment and as such are not legally binding. Fuel consumption data are compiled from test machines in Scandinavia and are affected by many immeasurable factors. As such, they cannot be considered legally binding.