

Forwarder

574E & 594E



 **EcoLog**<sup>®</sup>  
Forestry of tomorrow

# With the operator in focus

Eco Log's new range of E-forwarders are developed with the operator in focus. The E Series has been fitted with a completely new driver cabin where space, comfort and visibility are prioritized – everything so that you can work both comfortably and efficiently.

The new E Series is also equipped with Volvo Penta D8 engines that are characterized by high performance, reliability, fuel efficiency and low emission levels.

Read more about our E-forwarder at [ecologforestry.com](http://ecologforestry.com)

## Loader

574	FC12	120 kNm   8,5 m 10 m (88507 lb-ft)   (28 ft 33 ft)
	FC16	165 kNm   8,5 m 10 m (121698 lb-ft)   (28 ft 33 ft)
	X120F tilt	159 kNm   10,5 m (117272 lb-ft)   (34 ft)
594	FC16	165 kNm   8,5 m 10 m (121698 lb-ft)   (28 ft 33 ft)



3000h/  
2 year  
warranty\*

\* Which ever is reached first.  
Depending on country,  
this may be optional.



### IQAN MD4

The IQAN control system has been improved with more integrated features. The new device has a larger 7 inch touch screen.



### SERVICE FRIENDLY

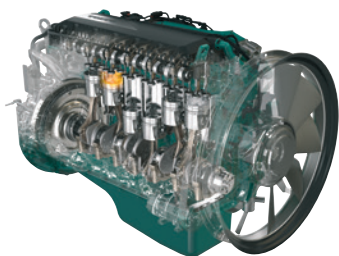
- Gathered service points and easy access to key components.
- The frame is equipped with a bottom plate that can easily be disassembled.
- Electric cabin tilt as an optional extra



## Spacious cabin



## Smart solutions



## ENGINE

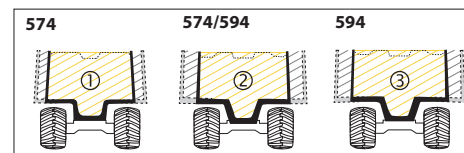
The Eco Log E-forwarder is powered by Volvo Penta D8 engines that are characterized by high performance, reliability, fuel efficiency and low emission levels.



## WIDE RANGE OF ACCESSORIES

The 574E can be equipped with extras such as, utility blades and brush guard.

## Loading area

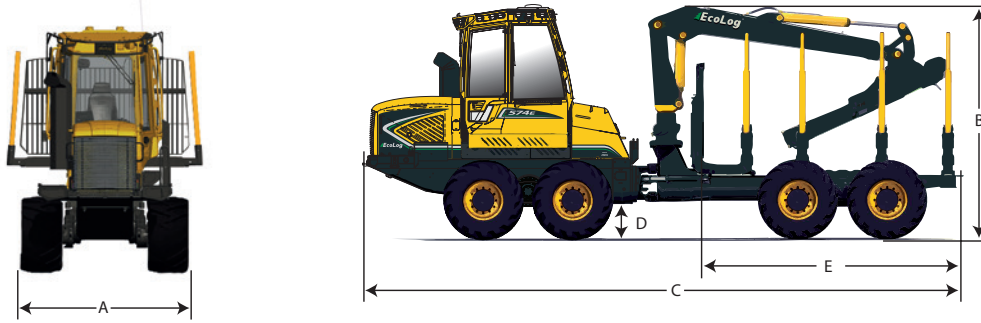


- ① 4,1–4,7 m<sup>2</sup> (44–51 sq ft)
- ② 4,5–6,1 m<sup>2</sup> (48–66 sq ft)
- ③ 5,8–7,2 m<sup>2</sup> (62–78 sq ft)

## LOADING AREA

The well-developed loading area ranges from 4.1 m<sup>2</sup> to 7.2 m<sup>2</sup> (44-78 sq ft)

# Specifications



## EcoLog®

### 574E

### 594E

Loading capacity, kg (lbs)	14 000 (30865)	20 000 (44092)
<b>Dimensions</b>		
Weight, kg (lbs)	18 000 (39683)	20 300 (44754)
Width (A), mm (in)	2 640 <sup>(1)</sup> (104 <sup>(1)</sup> )	3 155 <sup>(1)</sup> (124 <sup>(1)</sup> )
Height (B), mm (in)	3840 (151)	3930 (155)
Length (C), mm (in)	10055 / 10475(11075) <sup>(3)</sup> / 11140 <sup>(2)</sup> (396/412(436) <sup>(3)</sup> /439 <sup>(2)</sup> )	10535 / 11195 <sup>(2)</sup> (11790) <sup>(3)</sup> (415/441(464) <sup>(3)</sup> )
Ground clearance (D), mm (in)	650 (26)	720 (28)
Length loading bay (E), mm (in)	4 414 / 4 875(5425) <sup>(3)</sup> / 5 455 (174 / 192(214) <sup>(3)</sup> /219)	4 815 / 5 475(6070) <sup>(3)</sup> (190/216(239) <sup>(3)</sup> )
Approach angle, °	40	40
<b>Engine, Volvo Penta</b>		
Type	6 cyl. D8 - 7.7 l	6 cyl. D8 - 7.7 l
Stage	Euromot 4/EPA Tier 4F/Euromot 3a*	Euromot 4/EPA Tier 4F/Euromot 3a*
Power, kW (hp)	185 (252)	235 (320)
Torque, Nm (lb-ft)	1115 @ 1160 rpm (822 @ 1160 rpm)	1300 @ 1310 rpm (959 @ 1310 rpm)
Fuel tank, l (gal US)	220 (58)	220 (58)
<b>Transmission</b>		
Type	Hydrostatic mechanical	Hydrostatic mechanical
Tractive effort, kN (lbf)	195 (43838)	245 (55078)
Speed, km/h (mph)	20 (12)	20 (12)
<b>Hydraulic</b>		
Pump, cc (cu in)	140 (opt. 180) (8,5 (opt. 11))	180 (11)
Pressure, bar (psi)	235 (3408)	235 (3408)
Hydraulic tank, l (gal US)	180 (48)	180 (48)
<b>Wheels</b>		
Standard	600/55-26.5"	750/55-26.5"
Option	710/45-26.5" 800/40-26.5"	710/55-28.5" 780/50-28.5"
<b>Loader - Cranab</b>		
Lifting force, kNm (lb-ft) (standard)	120 (88507)	165 (121698)
Lifting force, kNm (lb-ft) (option)	165 (121698)	-
Reach alternatives, m (ft) (standard)	8.5/10 (28/33)	8.5/10 (28/33)

<sup>(1)</sup> With standard wheels; <sup>(2)</sup> Depending on rear frame length; <sup>(3)</sup> Max length with frame extension.

\*Only in market areas outside the EU, USA & Canada.

© Eco Log Sweden AB. We reserve the right to make changes in product specifications without prior notice. Some data presented in this document may be theoretical in nature. Pictures and texts are not contractual.