

# Harvester 688E



# Challenge gravity with Eco Log 688E

Eco Log 688E is an eight-wheel harvester, specially designed to minimize ground pressure when working on sensitive ground.

With the powerful Volvo Penta engine, combined with its versatility and flexibility, the Eco Log 688E is ready for your toughest job.

Read more about our harvesters at [ecologforestry.com](http://ecologforestry.com)

200kN  
(44962 lbf)  
traction

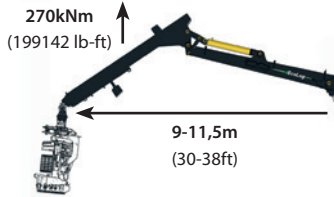
4,1N/cm<sup>2</sup>  
(5,9 lbf/inch<sup>2</sup>)  
ground pressure\*

\* May vary depending on equipment.





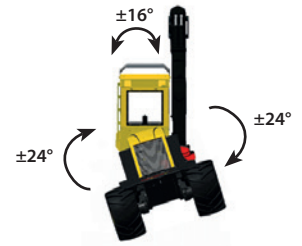
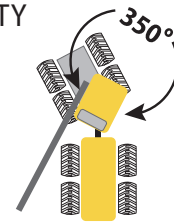
## CRANE EC260



## EXCELLENT VISIBILITY AND HIGH STABILITY

The driver cabin is for a full 350 degrees, which provides a nearly unbeatable overview over your working area.

The Eco Log 688E now has even better stability in the middle and improved steering of the tilt plate, resulting in very high mobility and stability.



## Some of the benefits of Eco Log 688E

- Minimizes ground pressure on sensitive ground
- Powerful Volvo Penta D8 engines
- Three turnable motors available as an option
- New hoods increase serviceability
- Improved mid-area stability
- Improved control of tilt plate
- Updated operator cab and service platform

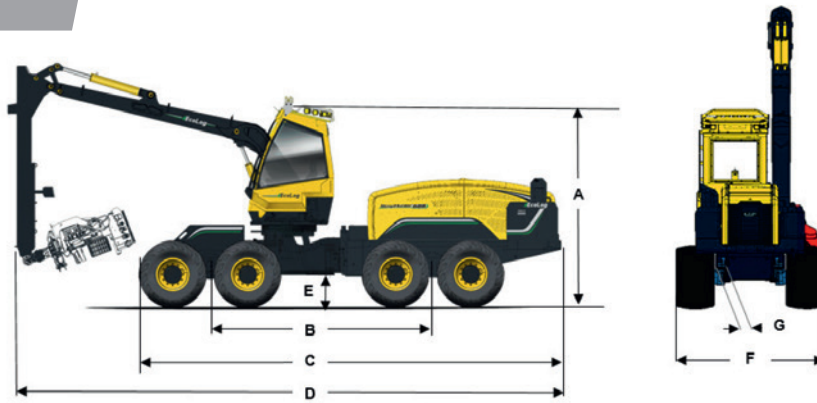


## POWERFUL MOTORS

Eco Logs Harvesters are powered by Volvo Penta D8 engines, characterized by high performance, reliability, fuel efficiency and low emission levels.



# Specifications



Dimensions	
Approximate weight, kg (lbs)	23000 (50706)
Height (A), mm (in) – Transport configuration	3850 (152)
Height (A), mm (in) – Working configuration	4210 (166)
Length (B), mm (in)	4530 (178)
Length (C), mm (in)	8570 (337)
Length (D), mm (in)	11065 (436)
Ground clearance (E), mm (in)	650 (26)
Width (F), tires 710   800, mm (in)	2940   3000 (116   118)
Width (F), tires 710   800, mm (in) - SteepHunter	3000   3060 (118   120)
Engine	
Type	VOLVO PENTA D8, 7.7l
Stage	Tier 4f, Euromot 4 <sup>(1)</sup>
Power@ 2200 RPM, kW (hp)	210 (286)
Torque@ 1237 RPM, Nm (lb-ft)	1250 (922)
Fuel tank, l (gal US)	460 (122)
Transmission	
Type	Hydrostatic mechanical
Approximate tractive effort, kN (lbf)	200 (44962)
Maximum speed, km/h (mph)	20 (12)
Hydraulic	
Implement pump for crane, cc (cu in)	140 (8,5)
Oil flow @1600 rpm for crane, l/min (gal US/min)	275 (73)
Implement pump for Harvester head, cc (cu in)	145 (8,8)
Oil flow @1600 rpm for harvester head, l/min (gal US/min)	285 (75)
Pressure, Bar (psi)	250 (3626)
Hydraulic tank, l (gal US)	200 (53)
Wheels	
Standard	8 wheels 710/45 - 26.5"
Option	8 wheels 800/40 - 26.5"

<sup>(1)</sup> Version Euromot 3a available for exportation to countries where legislation permits.

<sup>(2)</sup> 70kN (51629 lb-ft) theoretical value in the configuration with 3 swing motors – optional.

<sup>(3)</sup> Log Max 7000 is only available with 9 meter crane reach.

Cabin	
Rotation, °	350
Tilt sideways, °	±16
Pitch front   rear °	16   10
Seat	BeGe 7130L (Standard) - BeGe 3130L (Optional)
Miscellaneous	Touch screen control unit 7", Radio Bluetooth® MP3 with USB port, Manual tilt, Oven, 12 and 24 volt outputs
Crane	
Lifting force, gross, kNm (lb-ft)	270 (199142)
Reach alternatives, m (ft)	9 / 10 / 11 / 11.5 (30 / 33 / 36 / 38)
Slewing torque, gross, kNm (lb-ft)	50 / 70 <sup>(2)</sup> (36878 / 51629 <sup>(2)</sup> )
Steering	
Steering angle, °	43
Rotation joint, °	±24
Electrical system	
Voltage, V 24	24
Generator, A	130
Battery capacity, Ah	2 x 145
Bucking system	
Name	Forester
Processor clock speed	Intel® Core™ i3 Mobile, Sandy Bridge Processor
Internal memory	4 GB DDR3 1333 / 1066 MHz
Serial ports	4x Serial ports, 4x LAN, 6x USB ports (2x USB 2.0 / 4x USB 3.0), 1x CFast slot, 1x DVI-I, 1x VGA, Audio: Line-in, Line-out, Mic-in
Color display	Wide touch screen 15,6"
Operating system	Windows 8 Professional
Working lights	
Amount	20
Type	LED
Harvester head	
Log Max 5000, Log Max 6000 or Log Max 7000 <sup>(3)</sup>	

© Eco Log Sweden AB. We reserve the right to make changes in product specifications without prior notice. Some data presented in this document may be theoretical in nature. Pictures and texts are not contractual.